

ISO/IEC 17025-2005
ACCREDITED

Amalgatech LLC
2965 West Osborn
Phoenix, AZ 85017
Phone: 602-252-0280 Fax: 602-252-0282 E-mail info@amalgatech.com

Contact:	Ray Pederson	Sample ID	Lot # 310222015
Company:	DEF Products	Batch #	Lot # 310222015
Address:	422 East Barioni Drive	Date sampled	10/22/2015
City, ST, Zip	Imperial, CA 92251	Date Received	11/9/2015
E-Mail	defproducts@gmail.com	Date Promised	11/14/2015
Phone / Fax	760427-4479 /	Amalgatech ID	1511116
		Report Date	11/10/2015

Diesel Exhaust Fluid per ISO 22241¹

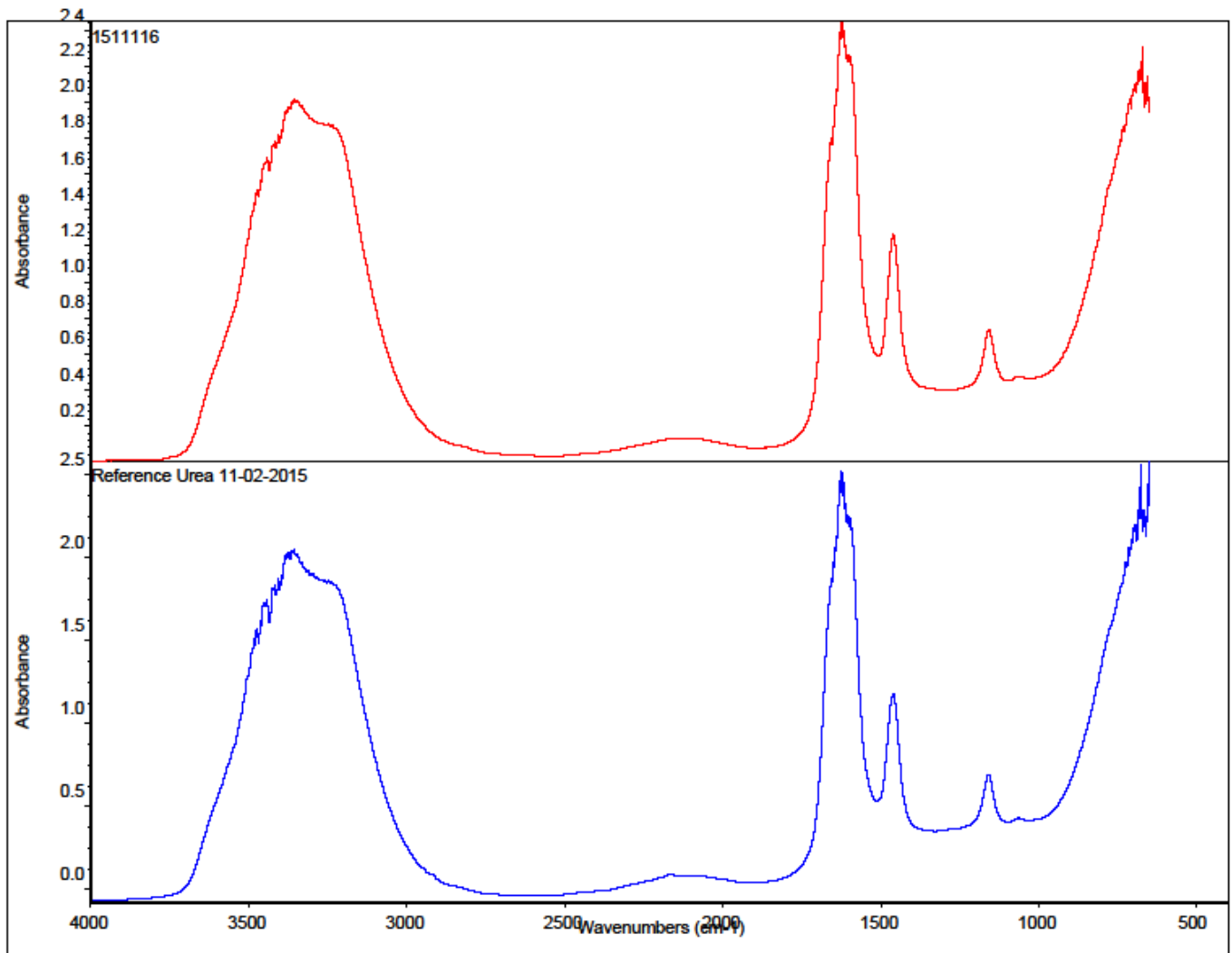
Characteristics	Unit	Test Methods	Limits		Acceptance Range ²		Results
			min.	max.	min.	max.	
Urea content	% (m/m)	ISO 22241-2 Annex A ISO 22241-2 Annex B	31.8	33.2	30.8	34.2	31.1
Density at 20°C	kg/m ³	ISO 3675 or ISO 12185	1087.0	1093.0	1086.5	1093.5	1086.5
Refractive index at 20°C	---	ISO 22241-2 Annex C	1.3814	1.3843	1.3804	1.3853	1.3810
Alkalinity as NH ₃	%m/m	ISO 22241-2 Annex D	---	0.2	---	0.24	0.03
Biuret	%m/m	ISO 22241-2 Annex E	---	0.3	---	0.34	0.296
Aldehydes	mg/kg	ISO 22241-2 Annex F	---	5.0	---	7.4	0.5
Insoluble matter	mg/kg	ISO 22241-2 Annex G	---	20	---	27.6	6.2
Phosphate (PO ₄)	mg/kg	ISO 22241-2 Annex H	---	0.5	---	0.53	0.06
Calcium	mg/kg	ISO 22241-2 Annex I	---	0.5	---	0.55	0.14
Iron	mg/kg	ISO 22241-2 Annex I	---	0.5	---	0.65	0.04
Copper	mg/kg	ISO 22241-2 Annex I	---	0.2	---	0.24	0.01
Zinc	mg/kg	ISO 22241-2 Annex I	---	0.2	---	0.26	0.00
Chromium	mg/kg	ISO 22241-2 Annex I	---	0.2	---	0.26	0.05
Nickel	mg/kg	ISO 22241-2 Annex I	---	0.2	---	0.26	0.08
Aluminum	mg/kg	ISO 22241-2 Annex I	---	0.5	---	0.65	0.06
Magnesium	mg/kg	ISO 22241-2 Annex I	---	0.5	---	0.65	0.01
Sodium	mg/kg	ISO 22241-2 Annex I	---	0.5	---	0.75	0.04
Potassium	mg/kg	ISO 22241-2 Annex I	---	0.5	---	0.75	0.29
Identity	---	ISO 22241-2 Annex J	Identical to reference		Identical to reference		Identical to Reference

Comments by Amalgatech:

Urea Content is lower than the spec limit but within the acceptance range for ISO22241; Density is lower than the spec limit but within the acceptance range for ISO22241; Refractive Index is lower than the spec limit but within the acceptance range for IS

² Acceptance Range = Limit adjusted for reproducibility per Annex B

Supporting Graph:



Important note: Amalgatech receives samples that are identified by the customer/sender and takes these identifications in good faith, reporting data to the customer using the customer's identification. Our laboratory services are not intended for marketing and are not product certifications. This report is © Amalgatech 2015. It may not be reproduced, altered, copied or disseminated except in whole. Use of the report is permitted, including copying, as long as the entire report, including this information section, is always provided in its entirety.

NOTE ¹ Amalgatech has performed the test in accordance with the revision of the standard in place at the time the test was performed. Amalgatech uses only active standards.

Respectfully submitted,

AMALGATECH

Ed Eaton
Chief Engineer